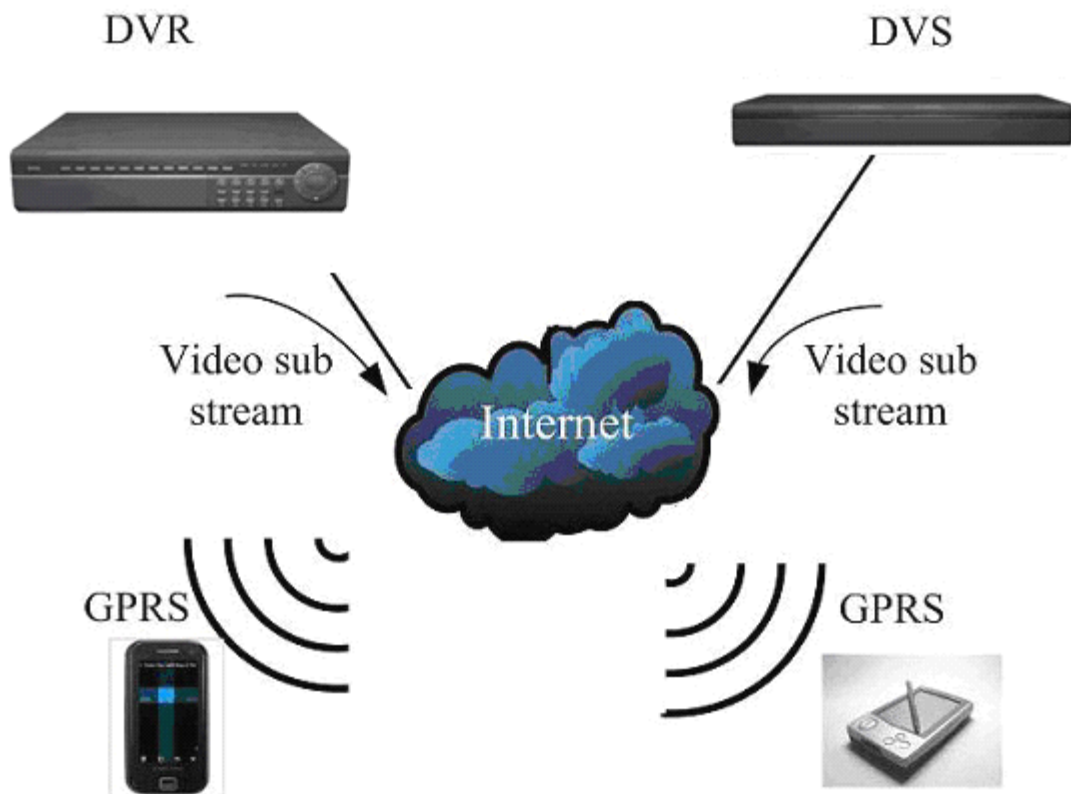
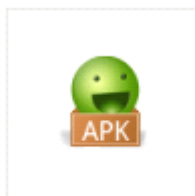


Mobile View Function User Manual(Andorid)



Recommended Mobile Phone List

Google Nexus one
HTC Desire
HTC Hero
HTC Magic
SHARP SH8128U
Lenovo LePhone
Sony Ericsson X10i
...



player.apk

Recommended use 3G or WIFI network, to obtain the better preview effect.

DVR configuration:

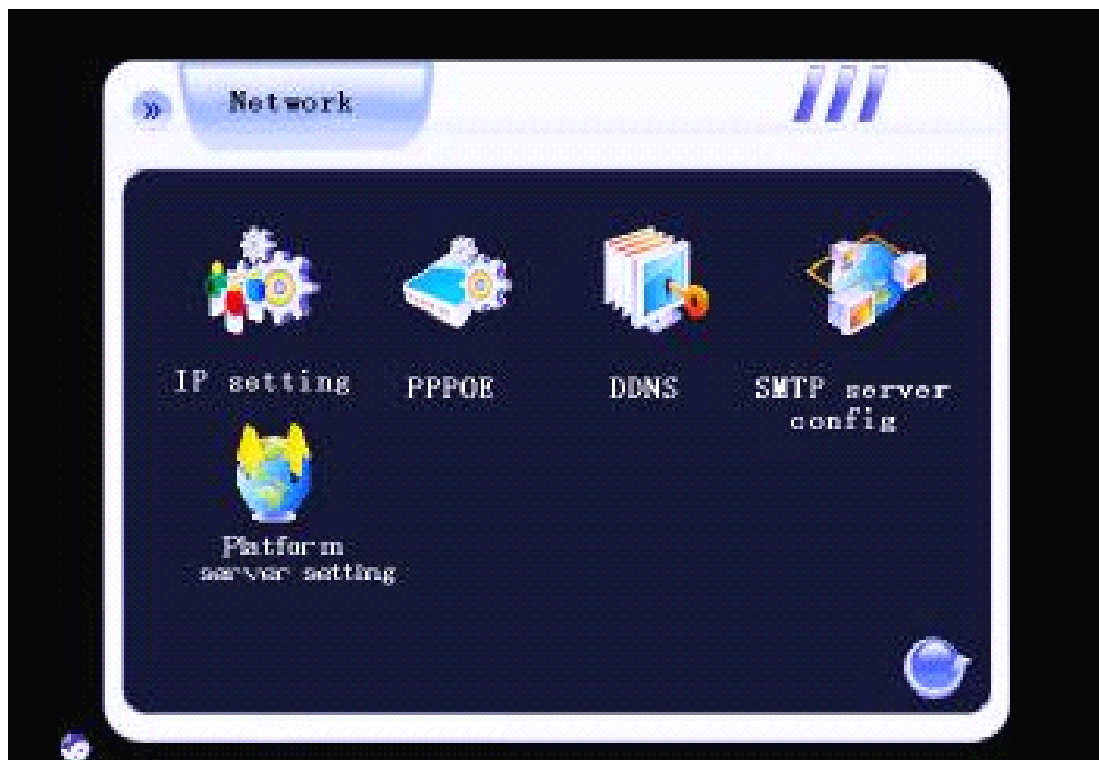
Note:

1. Please make sure that your DVR has Internet IP, and can be accessed via internet.
2. Please make sure that your DVR supports mobile view function.(It depends on the DVR Firmware version.)

Operation Steps:

7004/ 7008/ 7016:

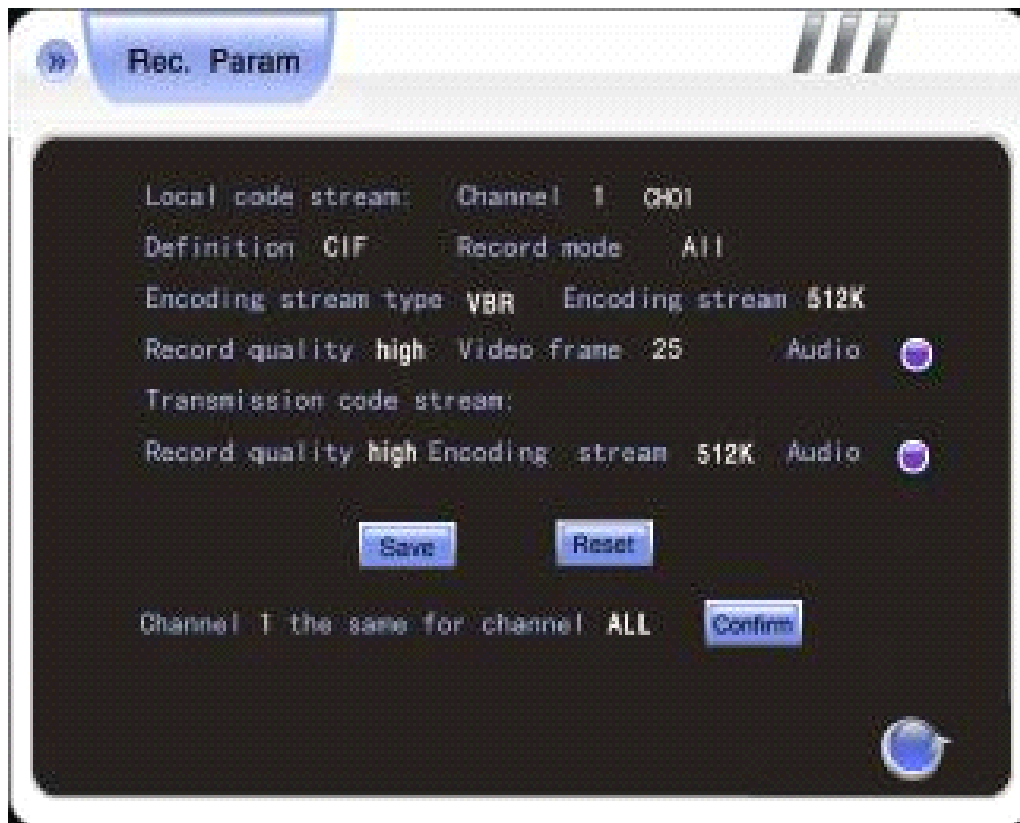
Menu->Network->Platform Server Setting->Load to enter the mobile port setting interface



You need to set the listen port (command port) and choose the channels you want to view. (default listen port is 15966 ,range is 1-65535, you can change it by yourself ,all channels default disable),and you need do the listen port router mapping in your router. Please keep other box in this interface as the default status. Please click connect to save the setting.



Through the Main menu->record pare to enter the network stream setting interface. User need to reduce the network stream. We suggest that choose the bitrate to 100K of each channel ,and the frame rate is 8 fps of each channel. Remember save the setting.

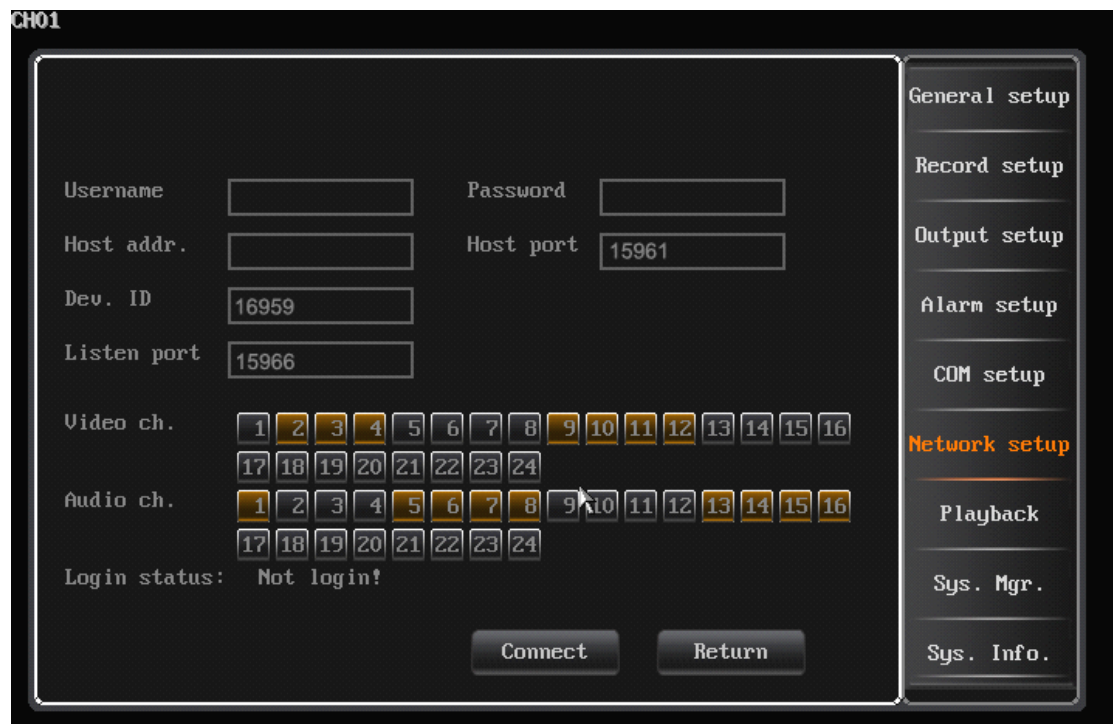


7000M/7000T2/7024/ 8000/ 8200:

Menu->Network->Server->Huake->Load to enter the mobile port setting interface

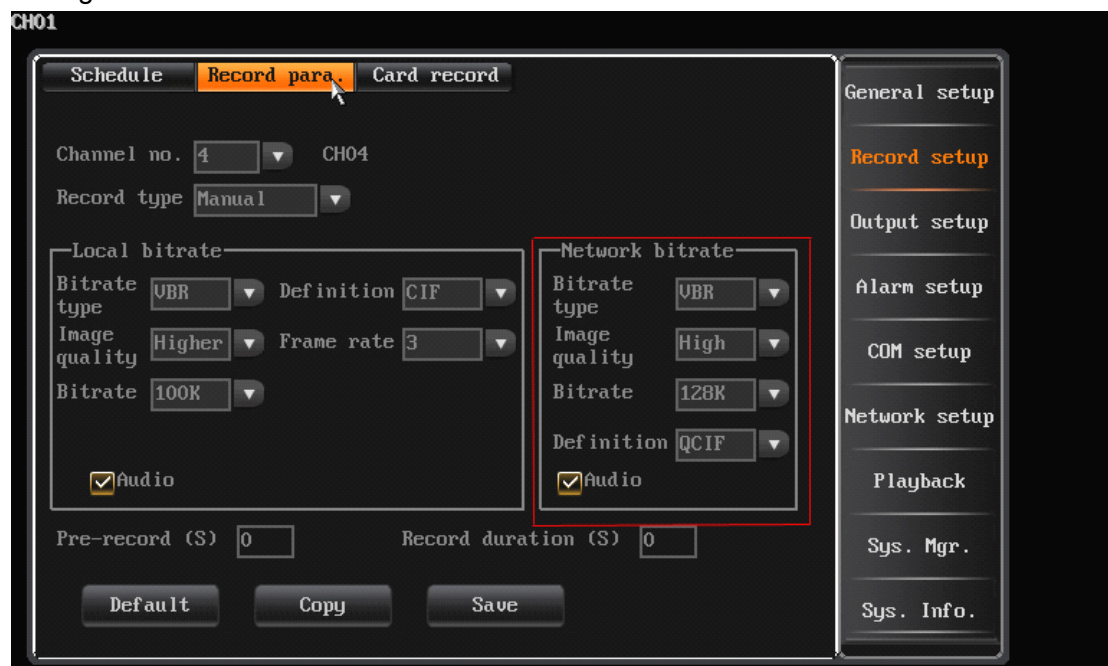


You need to set the listen port (command port) and choose the channels you want to view. (default listen port is 15966 ,range is 1-65535, you can change it by yourself ,all channels default disable),and you need do the listen port router mapping in your router. Please keep other box in this interface as the default status. Please click connect to save the setting.



Through the Main menu->record setting-> record pare to enter the network stream setting

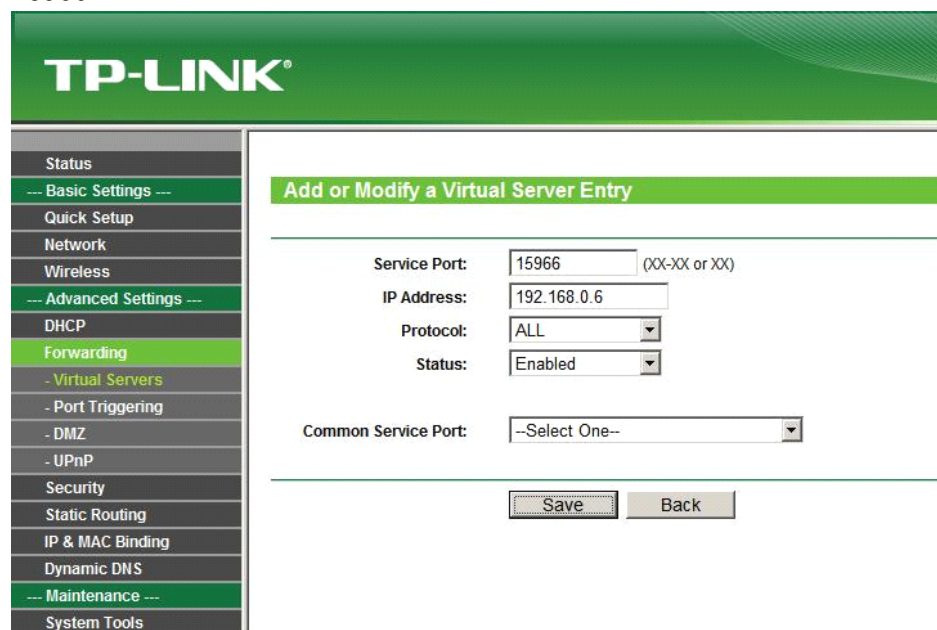
interface. User need to reduce the network stream. We suggest that choose the bitrate to 100K of each channel ,and the frame rate is 8 fps of each channel. Remember save the setting.



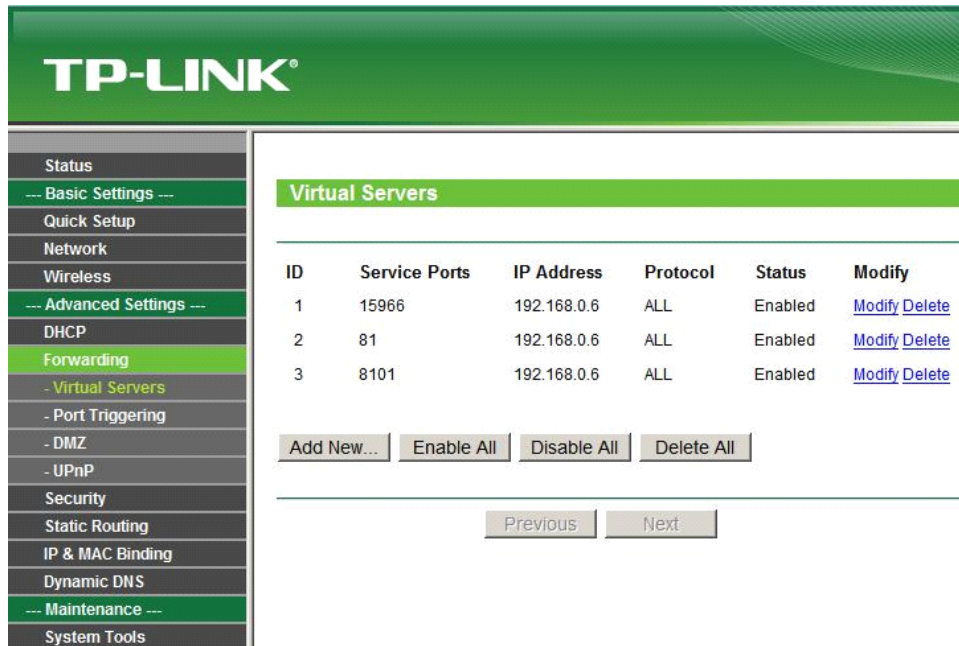
Router Configuration:

If the DVR connected to WAN through router, you need to do the command port (default 8101),http port (default 81),listen port(default 15966) router mapping .Take the TP-Link router as an example.

1. Do the port mapping in the router. Forward the listen port which your DVR set, default is **15966**.



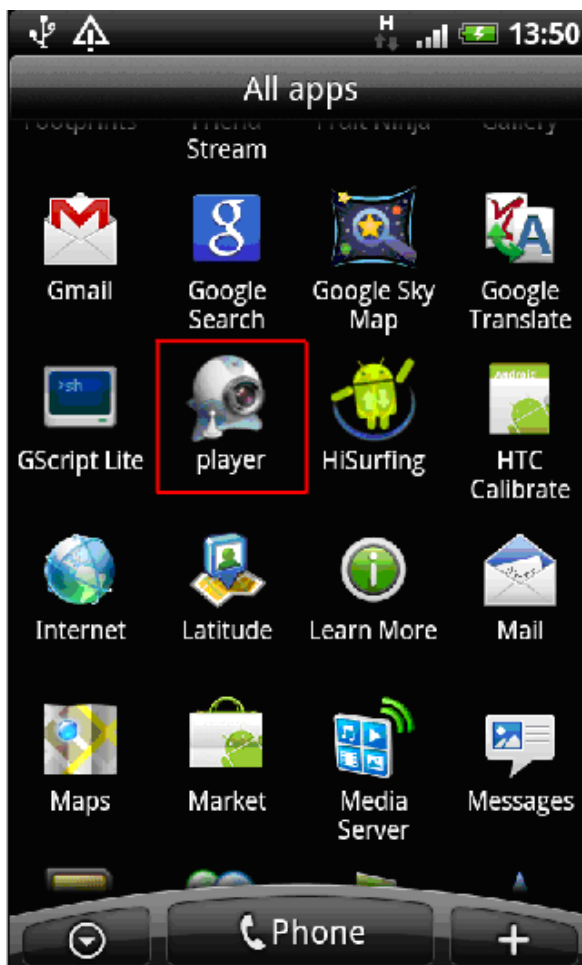
1. Do not forget forward other 2 ports which used on DVR internet setting.



Notes: if the DVR was connected to WAN through directly DDNS or PPPOE, you just need to do the listen port (default 15966) router mapping.

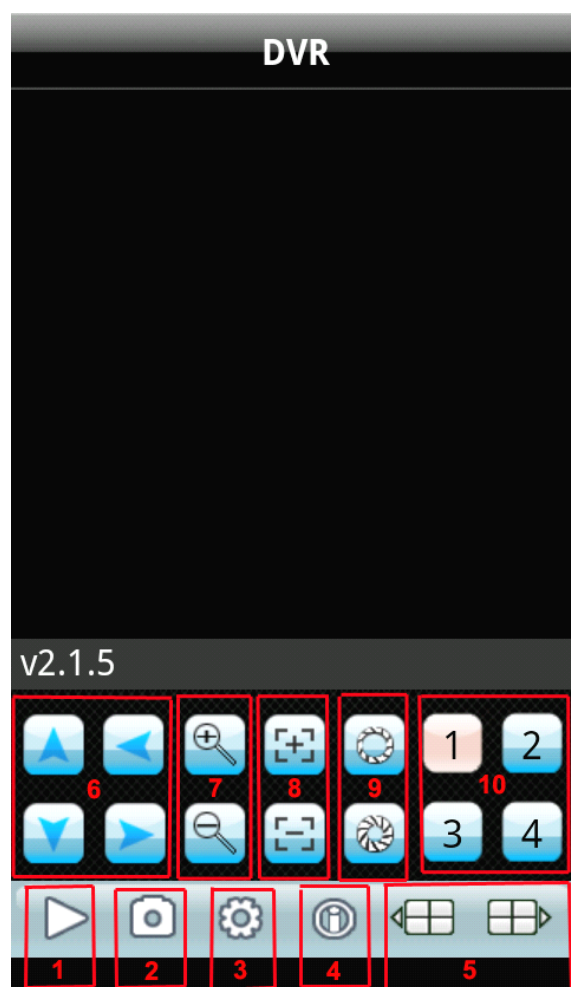
Phone:

After finishing the setup you will find the player icon on your phone main menu as the follows:



Run “player”

Main interface of player & function keys:



1. Pause / Play
2. Snapshot
3. Setting
4. Software Information
5. Channel group switch
6. Direction keys of PTZ control
7. Zoom+ & Zoom-
8. Focus+ & Focus-
9. Iris+ & Iris-
10. Channel switch

3.1 Access information setup

Turn into setup menu, and fill in the information according to your DVR mobile settings.

The screenshot displays a mobile application interface for configuring a DVR. The title bar at the top contains a 'Back' button, the word 'Settings', and a 'History' button. Below this is a section titled 'Devices Info' containing five input fields: 'Address' (183.15.222.248), 'Port' (15967), 'DeviceName' (DVR), 'User Name' (admin), and 'Password' (represented by six dots). The bottom portion of the screen is obscured by a black rectangle.

Address: input the IP address of the connected DVR.

Port: same with the command port you have set in your DVR platform server setting interface.

Device Name: you can set the device name to distinguish multiple devices.

User Name: the user name you have set in your DVR .

Password: same with user password you have set in your DVR.

After finishing the settings, press "Back" button to the main interface.

Press play button to start mobile surveillance and press channel selection keys to switch camera picture.